

# Tunable Creek Public School

Respect - Integrity - Participation



Tunable Creek Road The Channon

ph: 66886212

Wednesday 11th February, 2015



Hi everyone,

Thank you to everyone who supported us on Sunday at The Channon Markets. It is certainly wonderful to see the commitment the parents and community have to help our school fundraise so that we can make a difference for all our students. Our total profit from the day was \$1700. Thank you all once again for your ongoing support.

This newsletter has important information regarding two events that need your support.

Cogmed is a fun, interactive computer program that we will be completing over next Term. It is centred on Working Memory and Learning.

Cogmed is an evidence-based, cognitive training program that can be effectively implemented in the school learning environment to strengthen students' working memory. Working memory is essential for learning and supports many of the activities that children routinely engage in at school, including:

- Controlling attention
  - Remembering instructions
  - Organising information
  - Focusing
  - Resisting Distractions
  - Complex thinking
- Students participate in online activities

➤ Tell Them From Me Survey

The Tell Them From Me student survey asks questions about factors that are known to affect academic achievement and other outcomes. It aims to help improve the learning outcomes of students. The survey is designed to measure, assess and report insights at the school and system levels. The focus of this NSW survey is on student wellbeing, engagement and effective teaching practices.

More information is attached as well as the consent form, which needs to be returned to school by MONDAY 16<sup>th</sup> March.

Alison Bath

## Upcoming Events

### March 13

Stage 3 Enrichment – SCIENCE DAY @ Tuntable Creek

### March 16

Tell Them From Me consent forms returned to school

### March 24

Excursion to Lismore Heritage Centre/Museum

### March 27

Easter Scripture Presentation  
12.30pm

### April 2

Last Day of Term 1 2015

### April 3

GOOD FRIDAY

### April 6

EASTER MONDAY

## Excursions

On Tuesday 24<sup>th</sup> March, we will be going by bus to visit the Lismore Heritage Centre as part of our History unit. Travel will be by bus and we will be leaving at 10:30

Cost is \$10 per student or \$15 for 2 students in the same family.

Yesterday students went on a virtual tour to Calthorpes House in Canberra. It is house from the 1920's. Students were able to listen to one of the daughters tell her memories as a little girl; look at a variety of artefacts, including an ice box and read a story that Dawn told about her sister's birthday surprise. We compared the similarities and differences we found about our own families, houses, toys and activities.

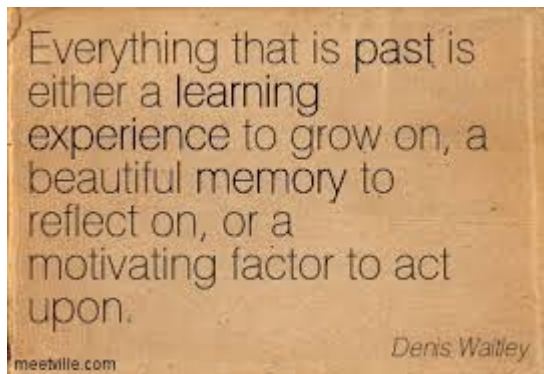
Please sign the attached note and pay for the excursion by 23<sup>rd</sup> of March.

- As discussed at our P and C meeting earlier on this year (and in the newsletter), due to changes in our budget system students who have not paid for the excursion by this date will not be able to attend and will stay at school.

If you have any questions regarding any of the above, please feel free to contact the school for further information.

This Friday we have Stage 3 students from Whian Whian, Dunoon, Modanville, Corndale and The Channon Schools coming to our enrichment day. Students will be working with Christine Freeman from Doroughby Environmental Education Centre, Tuntab Creek Landcare and myself. We will be looking at our project on The Giant Barred Frog, frog habitat, dipnetting, water testing, plant propagation, toad traps and frog houses. The end result is for students to take back information to their own schools on sustainability and make a difference in their local school environments.

Alison Bath



disappear in the day? Kids love to know the answers to life's mysteries but there are a few facts they often get wrong in the name of science.

Find out more: <http://www.schoolatoz.nsw.edu.au/homework-and-study/other-subjects-and-projects/science/10-scientific-facts-your-child-needs-to-know>

### **Year 10 subject selection**

In Year 10 students are asked to select subjects for Years 11 and 12. Here are some tips to help your teen choose well.

Find out more: <http://www.schoolatoz.nsw.edu.au/homework-and-study/planning-for-the-future/year-10-subject-selection>

### **A crash course in poetry appreciation**

Understanding why an author uses certain words or structures in their poetry can help your teenager enjoy the English subject and give greater depth to their writing and language skills.

Find out more: <http://www.schoolatoz.nsw.edu.au/en/homework-and-study/english/english-tips/a-crash-course-in-poetry-appreciation-for-your-high-schooler>

### **Succeeding in science**

Encouraging your teen to ask questions and helping them find the answers is top of the list in helping them to succeed in science.

Find out more:

<http://www.schoolatoz.nsw.edu.au/homework-and-study/other-subjects-and-projects/science/helping-your-teenager-succeed-in-science>

### **Facts about tutors**

Private tutoring to give kids a helping hand in their schooling is a growing business. However, it's also an area where parents can be vulnerable to bogus offers and misleading advertising.

Find out more:

<http://www.schoolatoz.nsw.edu.au/homework-and-study/homework-tips/facts-about-tutors>

### **Public speaking**

Does your child suffer glossophobia? Fear of public speaking is common. Try creating opportunities for your child to present speeches to the family, without putting pressure on them to perform. Here are some tried and true tips to make your child's next speech a success.

Find out more:

<http://www.schoolatoz.nsw.edu.au/homework-and-study/english/english-tips/public-speaking-in-primary-school>

### **Science starters**

Did humans live with dinosaurs? Does the moon

# Tunable Creek Public School

Respect - Integrity - Participation



Tunable Creek Road The Channon

ph: 66886212

Wednesday, 11 March 2015

**LISMORE HERITAGE CENTRE / MUSEUM  
TUESDAY 24<sup>TH</sup> MARCH 2015**

As part of our History Unit, students from Tuntable Creek Public School will be participating in an excursion to Lismore Heritage Centre and Museum.

**Total cost for the excursion will be \$10.00 per student, \$15.00 for family (2 students)**

Travel to and from the venues in Lismore will be by **bus**.

We will be departing the school at 10.30am.

Please do not have lunch orders or heat ups on the day.

Alison Bath  
Principal

**TUNTABLE CREEK PUBLIC SCHOOL – LISMORE HERITAGE CENTRE/MUSEUM  
TUESDAY 24<sup>TH</sup> MARCH 2015**



I give permission for my child/ren \_\_\_\_\_ of Tuntable Creek Public School to attend the History Excursion to Lismore Heritage Centre/Museum on Tuesday 24<sup>th</sup> March 2015. I understand that travel to and from the venues will be by bus.

I enclose \_\_\_\_\_ (\$10.00 per student/\$15.00 per family)

Signed: \_\_\_\_\_ Date: \_\_\_\_\_

Name: \_\_\_\_\_





Education &  
Communities

Office of Education

***Tell Them From Me* student survey:  
Information and consent form for parents and carers**

Centre for Education Statistics and Evaluation



February 2015

Dear Parents and Carers

This term, our school is taking part in the *Tell Them From Me* student survey. The survey will provide us with valuable feedback on what our students think about school life, how engaged they are with school and the different ways that teachers interact with them. Schools in Australia and around the world have used the *Tell Them From Me* survey to help them improve. The survey is completed on-line and is run by an independent research company, **The Learning Bar**, which specialises in school-based surveys.

Staff in schools will **not** be able to identify individual students from their responses. To ensure confidentiality, participating students will receive a unique username and password. Where fewer than five students respond to a question, the results will be suppressed. The survey typically takes less than 35 minutes to complete and will be administered by the school during normal school hours. Once the surveys are completed by students, reports are prepared and in most cases are available to schools within three business days.

As well as schools getting student feedback, the Department of Education and Communities, through the Centre for Education Statistics and Evaluation (CESE), will have access to data from across the State and will run a research project to look at state-wide patterns of student wellbeing, engagement and effective teaching practices. The research will look at how these things impact on student outcomes, including academic performance. Individual students and schools will **not** be identified in any CESE publications, and all information will be handled in accordance with the relevant privacy legislation. Students' personal information will not be disclosed by the Department to any other person or body other than as required by law.

This research will help schools in New South Wales to better understand how to improve student wellbeing and engagement. It will also help teachers and principals discuss what works to improve student outcomes.

Participating in the survey is entirely voluntary. Your child will not take part if either you or your child do not wish to. If, during the survey, your child is uncomfortable answering any question, he/she should leave it blank and move on to the next one. Your child can stop the survey at any time.

If you **do not want your child to take part** in the survey, please complete the attached form and return it to your child's school by **Friday 27 February**.

More information about the survey and the research is available on the CESE website:  
<http://surveys.cese.nsw.gov.au/information-for-parents>

Alison Bath  
Principal  
Tumble Creek Public School

Dr Jenny Donovan  
General Manager  
Centre for Education Statistics and Evaluation



# Tell Them From Me Student Feedback Survey

## Frequently Asked Questions (parents and carers)

Centre for Education Statistics and Evaluation

### What is the *Tell Them From Me* student survey?

The *Tell Them From Me* student survey asks questions about factors that are known to affect academic achievement and other outcomes. It aims to help improve the learning outcomes of students.

The survey is designed to measure, assess and report insights at the school and system levels. The focus of this NSW survey is on student wellbeing, engagement and effective teaching practices.

### What kind of questions will the survey ask?

The survey will ask students questions about:

|                              |                                    |                           |
|------------------------------|------------------------------------|---------------------------|
| Participation in Sports      | Homework Behaviour                 | Expectations for Success  |
| Teaching Rigour              | Participation in Clubs             | Behaviour at School       |
| Experiences of being bullied | Positive Teacher-Student Relations | Sense of Belonging        |
| Interest and Motivation      | Effective Learning Time            | Positive Learning Climate |
| Positive Relationships       | Effort                             | Teaching Relevance        |

### How have schools been selected to take part?

The survey is open for all NSW government schools to participate in at no cost to them. Your school has taken up this offer.

### How will taking part in this survey benefit my child's school?

The *Tell Them From Me* student survey will provide school principals and school leaders with insight into student engagement, wellbeing and effective teaching practices at their school, from the perspective of students.

Data collected from the survey responses are quickly compiled into reports for school leaders. Principals can then use this information to help them identify emerging issues and plan for school improvement.

### What does my child need to do to participate in the survey?

The survey typically takes less than 35 minutes and is conducted entirely online through a secure website operated by the survey developers, The Learning Bar. Schools will make computers or laptops available so that students can complete the survey during school hours.

### Does my child have to participate?

No, participation in the survey is optional. Your child will not take part if either you or your child do not wish to. If, during the survey, your child is uncomfortable answering any question, he/she should leave it blank and move on to the next one. Your child can stop the survey at any time. Parents/students have a right to apply for access to, and correction of, a student's information.



## Will the school be able to identify my child from their responses?

Staff in schools will not be able to identify individual students from their responses. To ensure confidentiality, participating students will receive a unique username and password. Where fewer than five students respond to a question, the results will not be made available.

A small number of staff in the Department's Centre for Education Statistics and Evaluation (CESE) will have access to individual student responses for the purpose of state-wide analysis. Individual students' data will be held on a secure server with access strictly limited to CESE researchers. The researchers are interested in trends only – not in individual student responses. Individual students and schools will not be identified in any CESE publication.

## What sort of analysis will be done on the survey data?

Once the surveys are completed by students, reports are prepared and in most cases are available to schools within three business days. School leaders may use the data to better understand the experiences and views of students at their school.

CESE will undertake state-wide analysis of the survey data in conjunction with existing student data held by the Department, including performance data. The results will help all schools better understand the relationship between wellbeing, engagement, effective teaching and student learning. Results from CESE's analysis of this data will also help teachers and principals discuss what works to improve student outcomes. This supports the Department's continuing focus on quality teaching and leadership. The data will be retained for future analysis to help us better understand the nature of student engagement and wellbeing over time.

## Can all school students participate in the survey?

The primary school survey is designed for students in Years 4 to 6. Schools are encouraged to allow as many students as possible in these Year groups to participate.

## When will the *Tell Them From Me* survey happen?

The surveys will be conducted in all participating schools between Monday 9 March and Thursday 2 April 2015 (Weeks 7-10 of Term 1).

## What is the Centre for Education Statistics and Evaluation (CESE)?

CESE is part of the Department of Education and Communities. It has been established to improve the effectiveness, efficiency and accountability of education in NSW.

CESE will identify and share what works, creating new opportunities to improve teaching and learning across all education sectors.

## What is The Learning Bar and what is their role?

The Learning Bar is an international education company, with offices in Australia and Canada, that specialises in school surveys and student assessments. They have been contracted by the Department to run the surveys for NSW public schools. Its survey, *Tell Them From Me*, is the largest national school survey in Canada, used in nine of Canada's ten provinces. More than 2,600 schools and 1.7 million Canadian students have participated in the survey over the last nine years.

The Learning Bar has conducted surveys in Australia before, with schools helping to adapt surveys, ensuring they are appropriate to an Australian context. For purely administrative purposes, The Learning Bar will also have temporary access to identifiable student responses to the survey questions. Other than The Learning Bar and CESE researchers within the Department, identifiable student responses will not be disclosed to any other person or body other than as required by law.

More information about The Learning Bar is available at: [www.thelearningbar.com](http://www.thelearningbar.com).



### Contact Details

For more information about the Centre for Education Statistics and Evaluation, please contact us:

@ [cese@det.nsw.edu.au](mailto:cese@det.nsw.edu.au)

[www.cese.nsw.gov.au](http://www.cese.nsw.gov.au)

## ***Tell Them From Me* Student Feedback Survey**

If you **do not want** your child to participate in the student feedback survey, please sign this form and return it to your school by Friday 27 February 2015.

I (*print name*) ..... DO NOT give consent  
for my child/children (*print name/s*) .....  
of class/es .....to participate in the ***Tell Them From Me***  
student feedback survey.

Signed..... Date.....





## SURVIVING ADOLESCENCE TOGETHER

Are you a parent or carer of a teenager?  
Are you looking for some information or support in parenting your teenager?  
Are you concerned about how your relationship with your teenager is changing?

### WHAT'S THIS COURSE ABOUT?

Surviving Adolescence Together is a parenting course that aims to support parents/carers through one of the greatest transitions a family must face. This course is designed to help you understand and respond proactively to the challenges of adolescence, and to help strengthen your relationship with your teenager.

We all want teenagers to make it through adolescence safely and to develop into great adults. Yet, there are many factors that influence our teens for good and bad. Extensive research has shown that the most protective factor in helping teens develop into resilient adults is a close, supportive relationship with a parent or carer.

Even though you may not feel it now, we believe the parent-teen relationship is key in helping families survive adolescence together.

### TOPICS COVERED

Through information sharing, exercises and group discussions we will explore:

- Adolescent development and changes in the brain
- How are relationships protective?
- The risks teens face and how it can all go wrong
- The struggles parents face in coping with all this
- Reflecting on parenting styles
- How parents and teens push each others buttons
- How to positively influence your teen and the roadblocks to this
- Practical strategies to reduce conflict, increase relationship connection and build your 'relationship bank account' to influence your teen and help them make wise choices.



### COURSE INFORMATION

**COST:** Free  
**DATES:** Monday 30th March, Tuesday 7th April and Monday 13th April  
**TIME:** 10.30am to 1pm  
**ADDRESS:** Kentwell Community Center, 20 Bangalow Road, Ballina NSW 2478

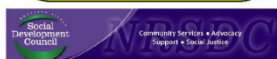
### CONTACT

Please call or email Steve or Monica, 9am-5pm Monday to Fridays.  
**Bookings are essential**

**Steve** - [reconnectballina@nrsrc.org.au](mailto:reconnectballina@nrsrc.org.au)  
w) 02 6636 4366  
m) 0429 190 210  
**Monica** - [reconnectismore@nrsrc.org.au](mailto:reconnectismore@nrsrc.org.au)  
w) 02 6620 1849  
m) 0417 026 585

### ABOUT US

Steve and Monica work with youth and families through the 'Reconnect' and 'Getting It Together' programs of the Northern Rivers Social Development Council.



## Meet the Candidates Forum ELECTION 2015

What's important to YOU?

What do YOU want to ask your local candidates?

How will our elected state candidates represent our communities?

Northern Rivers Social Development Council (NRSDC) is holding a pre-election forum in each state electorate in the Northern Rivers region – Ballina, Clarence, Lismore and Tweed.

All nominated candidates in each electorate have been invited to attend.

This forum is your chance to hear the candidates talk about issues relating to social and community development in your communities and to ask them questions about your concerns.

### Forums:

**Tweed:** Monday 9th March, South Tweed Sports Club  
Minjungbal Drive, Tweed Heads  
6.00pm to 8.00pm

**Ballina:** Wednesday 11th March, Ballina Surf Club  
Lighthouse Parade, East Ballina  
6.00pm to 8.00pm

**Clarence:** Tuesday 17th March, South Grafton Ex-Services Club  
Wharf St, South Grafton  
6.00pm to 8.00pm

**Lismore:** Wednesday 18th March, Lismore Workers Club  
231 Keen Street, Lismore  
6.00pm to 8.00pm

### Be heard!

Email your questions to the candidates to [election@nrsrc.org.au](mailto:election@nrsrc.org.au)  
or go to our Facebook Page  
<https://www.facebook.com/events/1403928103249009>



## Honey Lemon and Coconut Oil Syrup

Soothes Sore Throats and Coughs - Relieves Allergies - Boosts Immune System



### Recipe

3 Tbs Lemon Juice  
1/4 Cup Raw Honey  
2 Tbs Coconut Oil

TheCoconutMama.Com

## 2014-2015 NSW Family Energy Rebate

\$150\*  
TOWARDS  
ENERGY  
BILLS



APPLY  
ONLINE  
NOW!

2 MINUTES TO FILL IN A FORM  
<https://applications.fer.trade.nsw.gov.au/>

\* eligibility criteria apply



Trade & Investment  
Resources & Energy

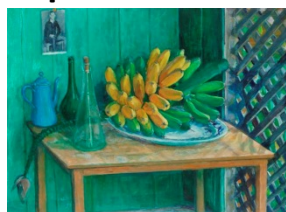


Apply before  
Midnight  
16 June 2015

FOR MORE INFORMATION & ASSISTANCE

PHONE - Service NSW 13 77 88  
EMAIL - [fer.program@trade.nsw.gov.au](mailto:fer.program@trade.nsw.gov.au)  
WEB - [www.resourcesandenergy.nsw.gov.au/info/familyenergyrebate](http://www.resourcesandenergy.nsw.gov.au/info/familyenergyrebate)

## Relax over a cup of tea and hear art historian and guest speaker David de Giustino explore the historic, subjective and decorative aspects of art throughout history.



**11.00am - 11.45am Gardens in Art**

Gardens are (or can be) 'works of art' in themselves, and many artists have included gardens in their paintings. Come and learn the many ways that gardens have been depicted over the centuries.

**2.00pm - 2.45pm Food in Art**

We all enjoy food, and some of us like preparing it. But why have so many artists chosen to depict through paintings, mosaics and sculptures the things we eat? Come and learn about the many ways that food has been celebrated over the centuries

**Cost \$5 per talk (first 5 seniors per talk are free)**

**If you'd like to attend please phone the Gallery on 02 6670 2790 to book.**

**David di Giustino** is a distinguished lecturer of Modern History, who has had an eminent career teaching in universities. He now divides his time between Port Macquarie and Port Sanilac, Michigan. David enjoys sharing his cosmopolitan knowledge of art and architecture in an engaging and informal manner.

**Image:** Margaret Olley *Bananas from the garden, Farndon* 1974 oil on board 74 x 100cm

Gift of Wayne Kratzmann, 2014, Tweed Regional Gallery Collection

**Anouk Beck** | Curator | Public Programs

(Sunday, Monday, Tuesday)

p (02) 6670 2799 | f (02) 6670 2797 | e [anoukb@tweed.nsw.gov.au](mailto:anoukb@tweed.nsw.gov.au) | w [artgallery.tweed.nsw.gov.au](http://artgallery.tweed.nsw.gov.au)

2 Mistral Road (Cnr Tweed Valley Way) Murwillumbah South NSW 2484 | PO Box 816 Murwillumbah NSW 2484 | ABN: 90 178 732 496

Open 10am - 5pm Wednesday to Sunday. Closed Good Friday and Christmas Day. Admission free.