

Tunable Creek Public School

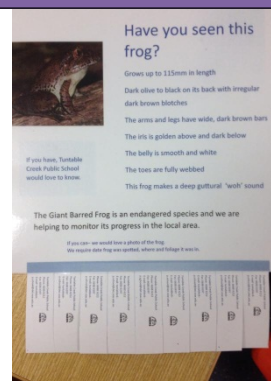
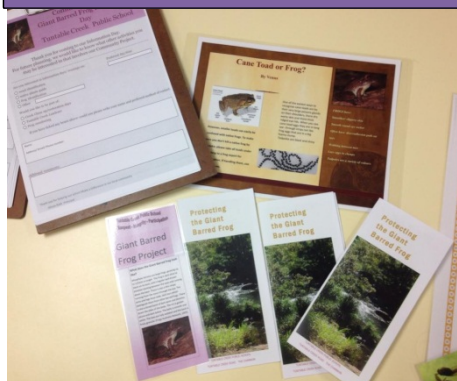
Respect - Integrity - Participation



Tunable Creek Road The Channon

ph: 66886212

Tuesday 9th June, 2015



Hi everyone,

After this week, only 2 more weeks until the school holidays. Miss Jodie and I are busy collaborating on reports which will be sent home on Friday 19th June.

In the last few weeks, we have spoken with the students on what a good learner looks like. We actually asked the students what they thought a good learner was and whether their teachers help them to learn strategies for learning.

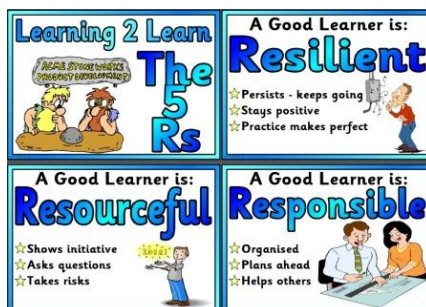
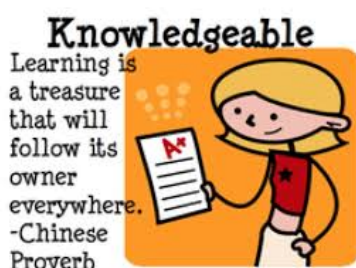
The student's responses indicated that many felt that a good learner was related to their behaviour/ attitude to their work. They were able to articulate words concerning organisation and persistence. They didn't feel that the best learner got all their work correct, but how they applied themselves. Student's agreed that the teachers help them and were able to describe what they did.

We are now looking at how students can be their own learners. We googled what a good learner does and one of the discussions revolved around 'the boring stuff.' Those things we HAVE to do. We also found a set of posters on good learners, which we have copied to refer to. While these have 5 broad areas, it still allows us to discuss around the topic. Today I was asked "How does this help me play sport?" So, we had a good talk around work we do and how it applies to other things.

Tomorrow is a learning day for Stage 2 students at Whian Whian School. Students will be involved in learning around the Creative and Visual Arts area. The day runs from 9-2, allowing students to catch the bus to school in the morning and again back for the bus run home.

I believe that there was LOTS of learning from the day in at the Lismore Council Recycling Centre. Mrs Whillas commented on the fantastic manners and behavior our students exhibited on the day. Well done everyone. Looking forward to your fab homework article around the learning!

Alison Bath



Upcoming Events

June 10

Stage 2 Enrichment Day Whian Whian PS

June 19

NR Boys Softball Trials

June 26

Last Day Term 2

July 13

Staff Development Day

July 14

TERM 3 – Students return

Healthy Harold \$10 + bus
Corndale Public School

July 18

NORPA – 26th Storey
Treehouse (Lismore)



INDIGENOUS MARATHON PROJECT
RUN • SWEAT • INSPIRE

DEADLY FUN RUN

WEDNESDAY 24TH JUNE
Queens Park, CASINO

10:00am Registrations
10:30am START
3KM WALK/RUN

Meet IMP Squad Member and local Coombell mother Eileen Byers, who is training for the **2015 New York City Marathon**

Medals for ALL finishers

Richmond Valley Council

Bulgaru Ngarru Medical Aboriginal Corporation
43 Johnston St, Casino NSW 2471
Email: info@bmarc.com.au
Phone: 02 6662 2511
Fax: 02 6662 4845

A SOLID JOB IS A SMOKE FREE JOB

Interested in farm work?
CERTIFICATE II RURAL OPERATIONS

Get skills in:

- Fence installation & repair
- Chemical use
- Tractor operation
- Workplace Safety
- Workplace communication
- Machinery operation and maintenance
- Planting and Pruning
- Weed identification

FREE TRAINING...
18 week course

Start: 21st/July 2015
Who: 16 - 24 year olds
When: Tues & Thurs. Some Wed's
Where: TAFE Wollongbar & YWCA NSW Goonellabah 2480

APPLY NOW -
Contact Brooke for an expression of interest form
P: 02 6625 5800
M: 0425 711 137
E: brookec@ywcansw.com.au

INFORMATION SESSION -
Tues 14/July/2015
10am-12am

YWCA NSW Northern Rivers
101a Rous Rd, Goonellabah

TAFE
NORTH COAST INSTITUTE

A productive futures program of **YWCA NSW**
Supporting people at critical times

Page 1 of 1



Learning sign language is fun

Auslan or Australian Sign Language is the language of the Australian Deaf Community. It's a **unique and rich visual language**. Through fluid motions, pictures unfold before your eyes and come to life.

The **beginners course** is taught by everyday users of Auslan who will share the nuances of this beautiful language in a **fun and supportive environment**. You will learn to communicate visually using gestures, body language and facial expressions.

Term 2 June - July 2015

Sign Language 1 (Auslan)

	Module	Day & Time	Start	Duration	Full	Conc.
Lismore	SL1-LI314	Thurs 6pm-8pm	18-June	7 weeks	\$ 190	\$ 145

Term 3 August - September 2015

Sign Language 1 & 2 (Auslan)

	Module	Day & Time	Start	Duration	Full	Conc.
Lismore	SL1-LI314	Tues 6pm-8pm	11-August	7 weeks	\$ 190	\$ 145
Lismore	SL1-LI414	Thurs 6pm-8pm	13-August	7 weeks	\$ 190	\$ 145

At only \$190 per person, spaces are filling quick!

For more information visit deafsocietynsw.org.au or contact Simon Mahony at smahony@deaf.nsw.edu.au



Can't see this email? [View the online version](#)
Have you added whatson@sydneyolympicpark.com.au to your safe sender list to make sure you don't miss any deals?

27 Jun - 12 Jul 2015 | [Maps](#) | [Transport & Parking](#) | [Facebook](#) | [Twitter](#) | [YouTube](#)

Kids in the park

Sydney's largest school holiday program returns this winter school holidays! There are 50+ fun-filled activities to keep kids active, outdoors and entertained. A range of activities are free or under \$25, making it affordable to discover Sydney's most exciting playground this holiday.

Archery - Kids on Target & Little Archers
All Day Holiday Recreational Program
Science, cooking, writing workshops
Cheerleading & gymnastics
Circus Skills & Flying Trapeze

Circus Skills' Amazing Carnival Game Show - FREE
Park Patrol - Mangrove Mysteries
Sport & adventure camps
Laser Tag - NEW
...and lots more

Full details at www.kidsinthePark.com.au

Kind regards
Sydney Olympic Park Team

[read more](#)

SydneyOlympicPark

[Back to top](#)

Copyright © 2015 Sydney Olympic Park Authority

**TUNTABLE CREEK PUBLIC SCHOOL
STAGE 2 ENRICHMENT DAY @ WHIAN WHIAN PS
Wednesday 10 June 2015**

Students in Years 3 and 4 (Stage 2) from Tuntable Creek Public School will be participating in a CAPA ENRICHMENT (Art, drama and music) day at Whian Whian Public School on Wednesday 10th June 2015. The program will run from 9.00 am to 2.00pm.

Students will travel by private vehicle with Ms Kathleen McMahon to and from Whian Whian Public School, leaving Tuntable Creek Public School at 8.30am and returning by 2.30pm for the afternoon school bus run.

Students are required to wear purple school shirt and sensible covered shoes. Please bring a packed lunch, morning tea and water. School hats will be taken for outside play.

Alison Bath
Principal

**TUNTABLE CREEK PUBLIC SCHOOL
STAGE 2 ENRICHMENT DAY @ WHIAN WHIAN PS
Wednesday 10 June 2015**

I hereby give permission for my child/ren _____ of Tuntable Creek Public School to participate in the Stage 2 Enrichment Day at Whian Whian Public School on Wednesday 10th June 2015

I understand that travel to and from the event will be by private car with Ms Kathleen McMahon and there will therefore be no cost involved in the day.

Name: _____

Date: _____

Signed: _____